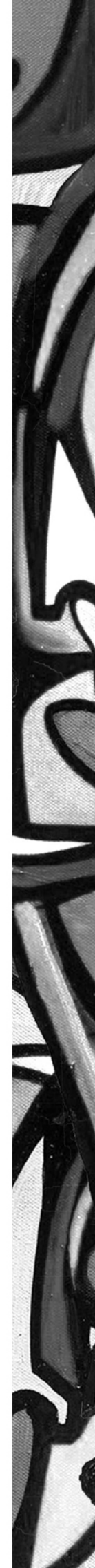

PERSPECTIVE

Bộ sưu tập "Perspective" lấy cảm hứng từ bức tranh trường phái lập thể của người họa sĩ Gabe Wies, ông phá vỡ những diện, mảng trên khuôn mặt bất kể không gian và thời gian tạo thành một khối cảm xúc với thông điệp mà ông muốn truyền tải rằng một sự vật, sự việc hay kể cả một con người thì ta nên nhìn nhận nhiều góc độ khía cạnh khác nhau, vì chúng đều mang đến sự đa dạng riêng biệt.









EMBROIDER

BEADED

#graduationproject

PRINTED

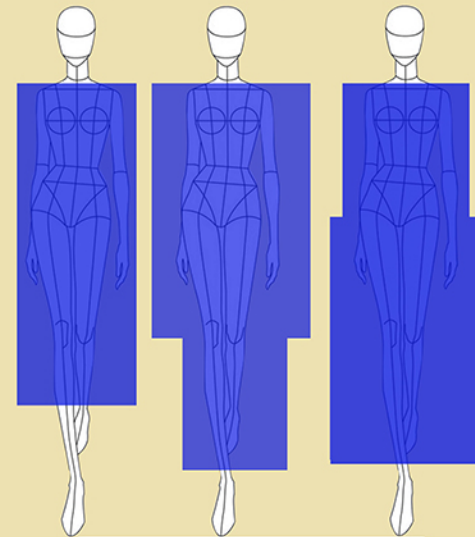


PATTERN



#graduationproject

COLOR



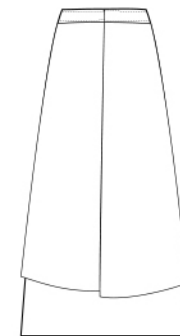
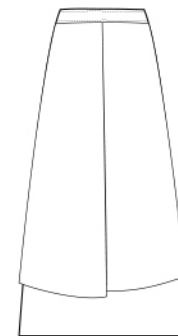
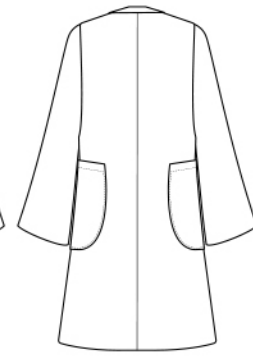
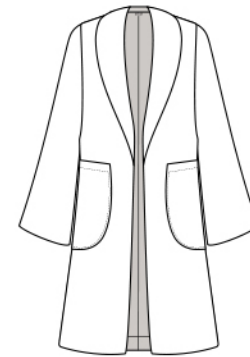
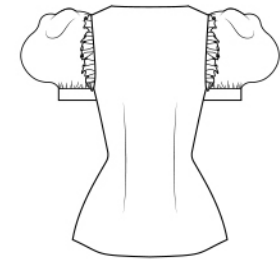
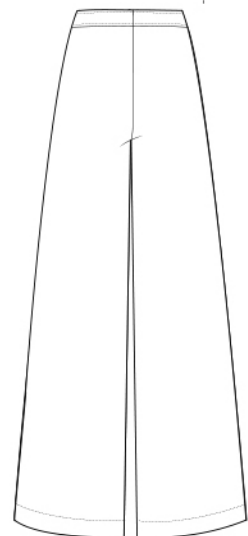
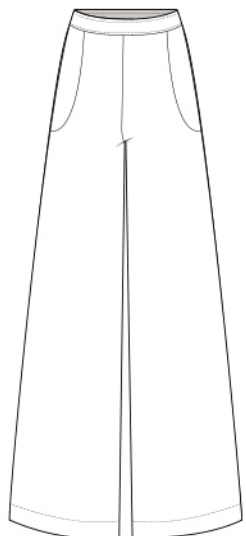
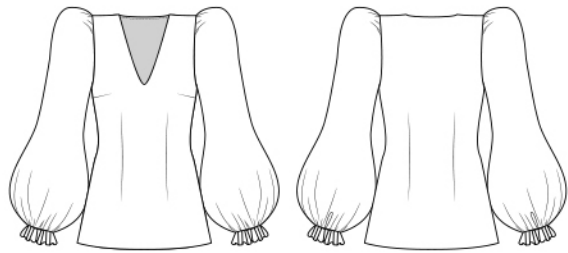
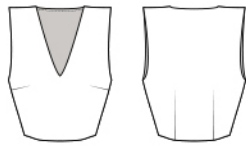
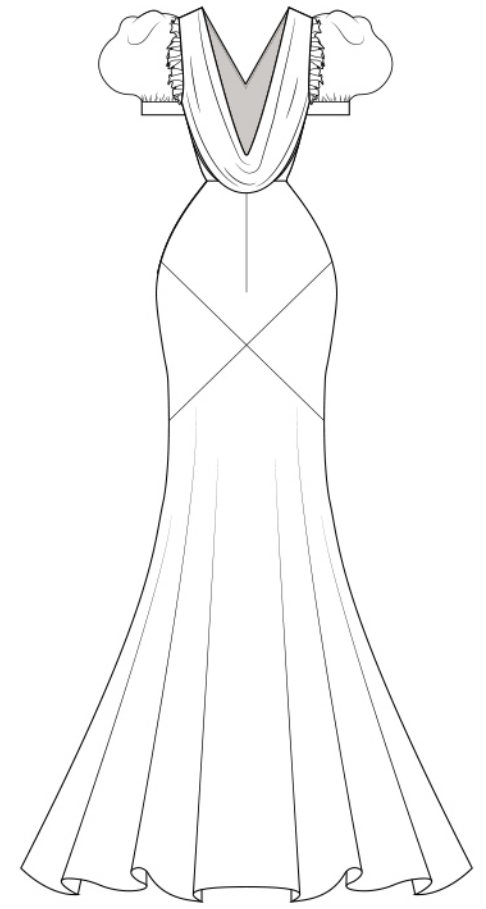
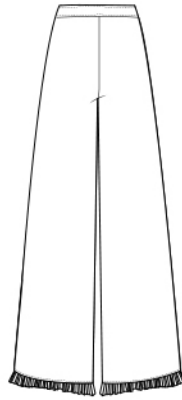
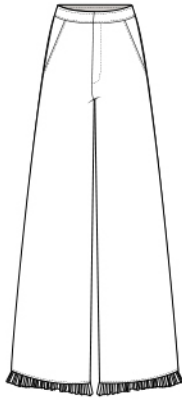
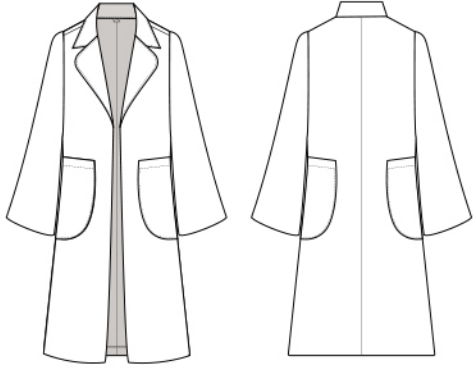
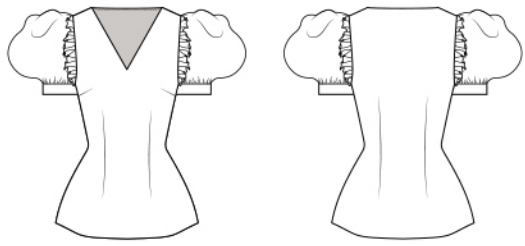
FORM

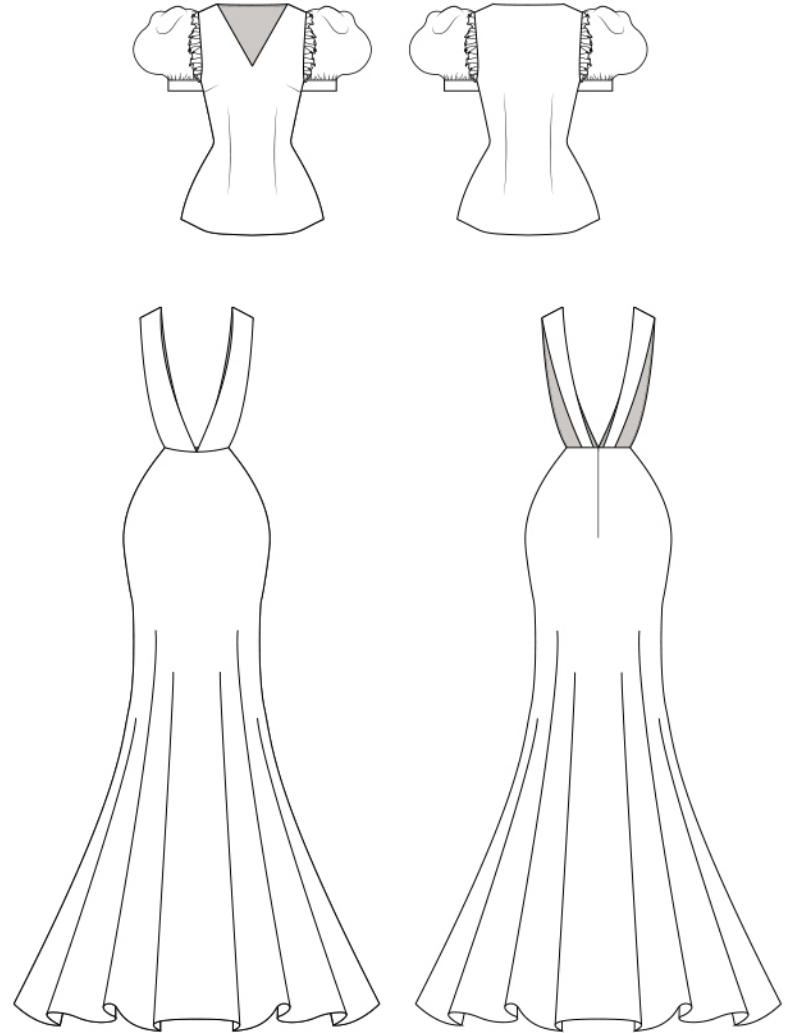
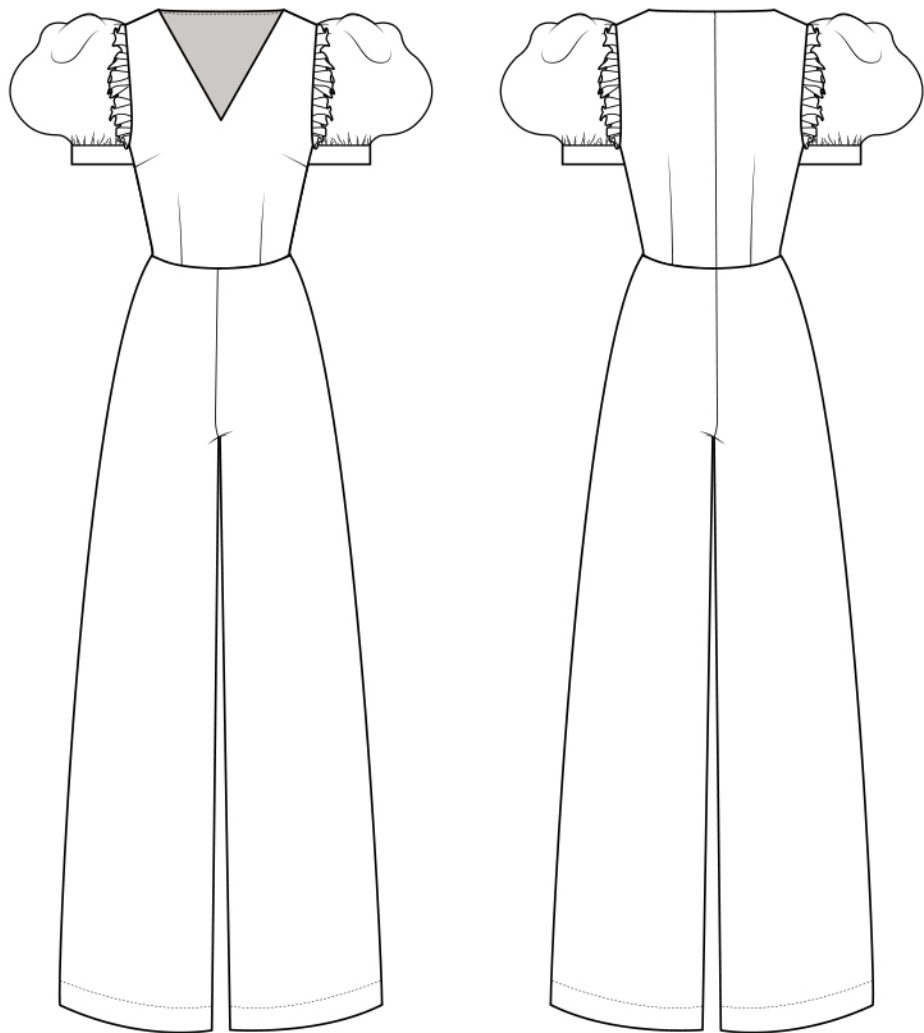
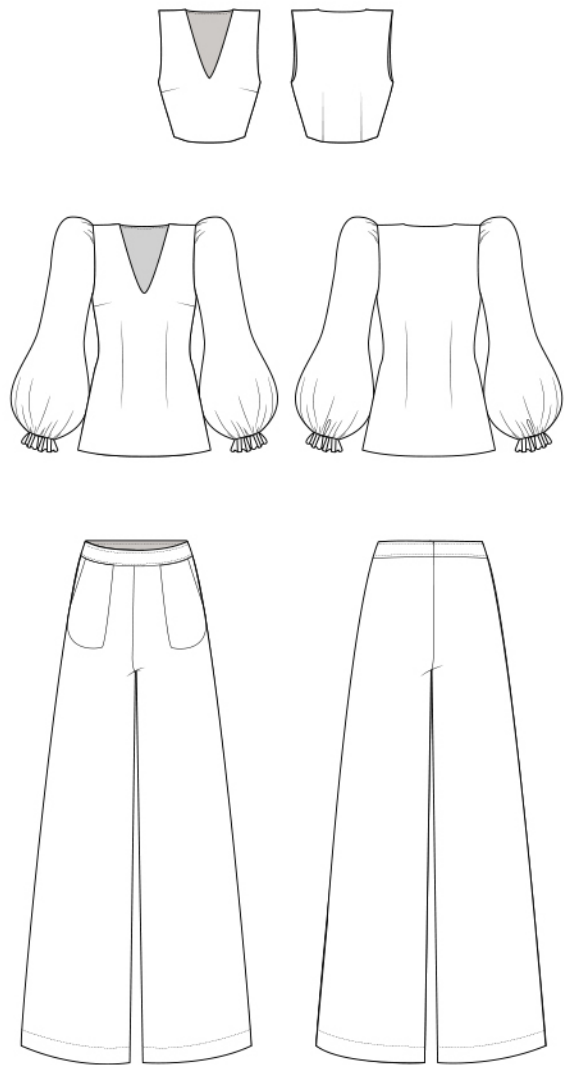
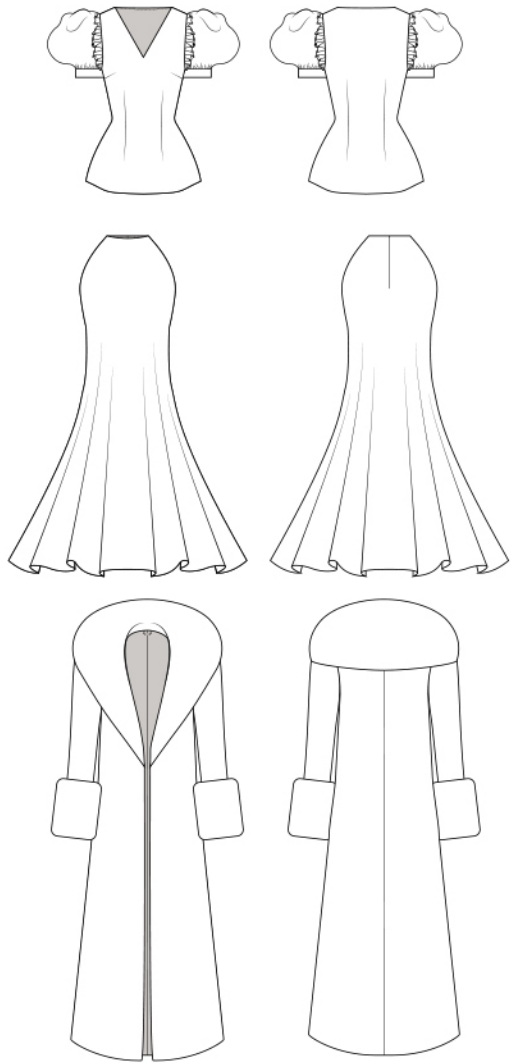
SKETCH

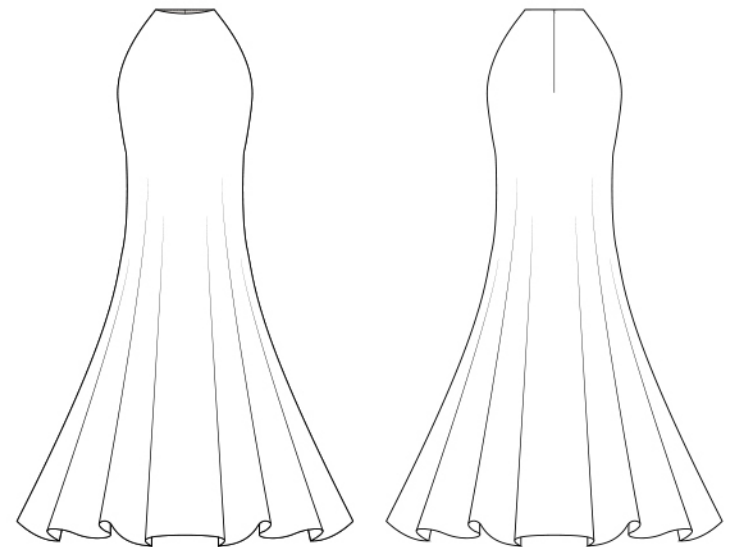
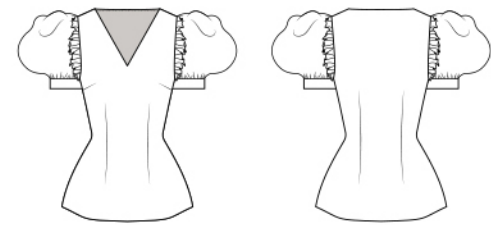
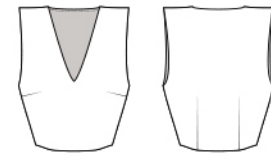
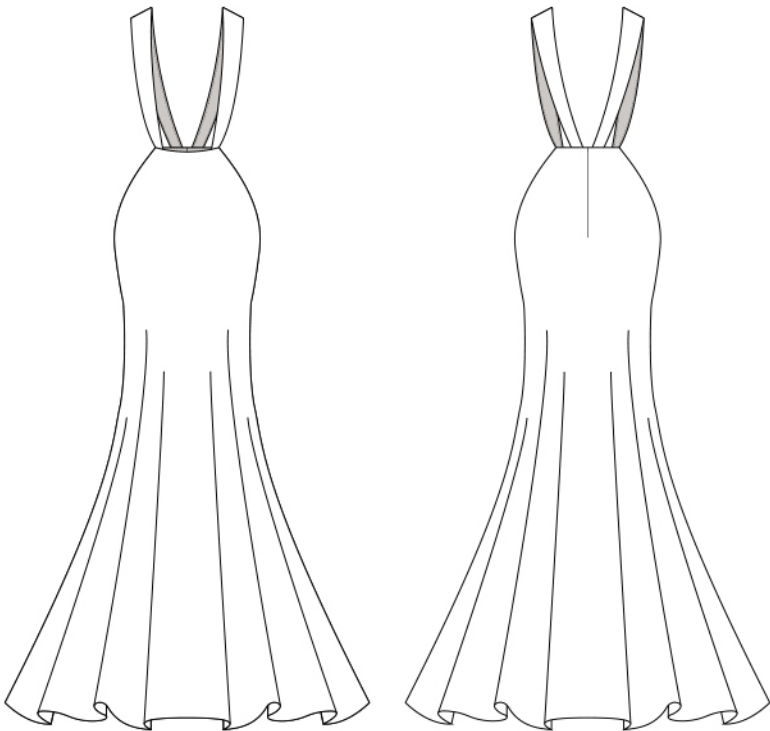
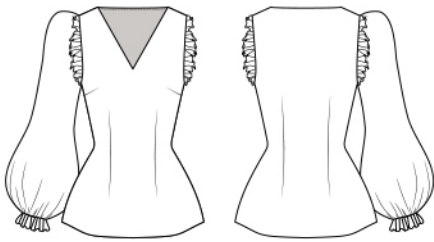
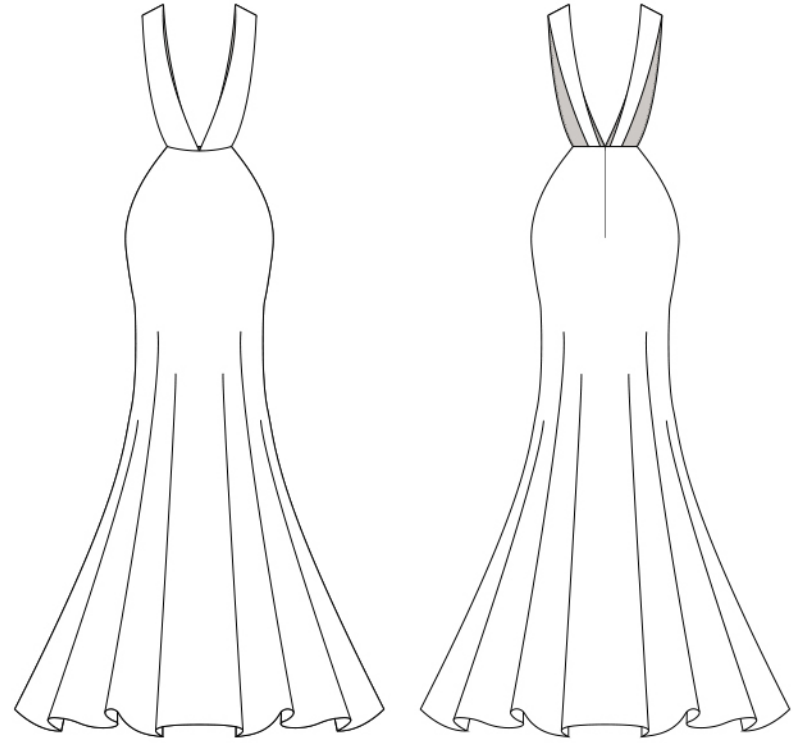
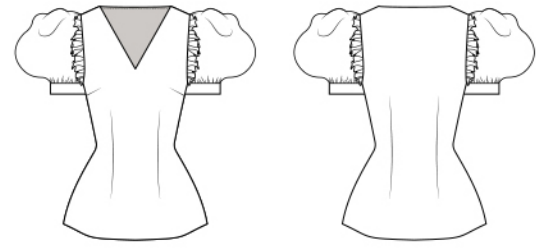
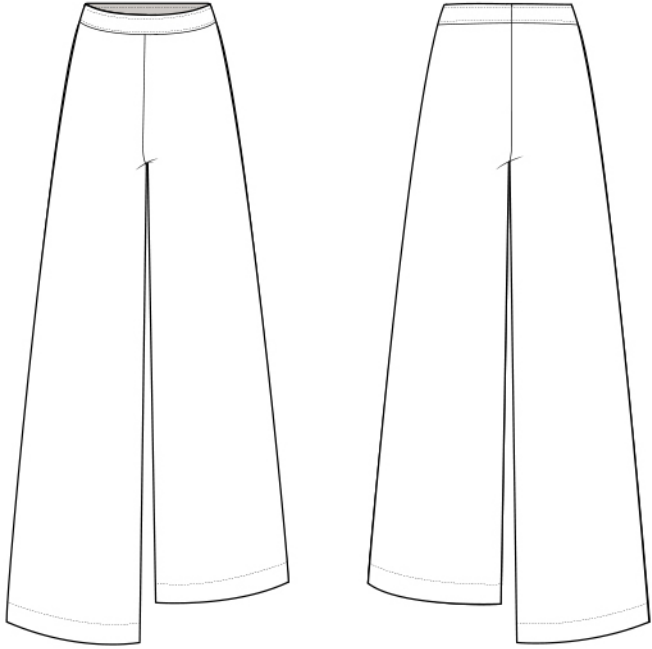
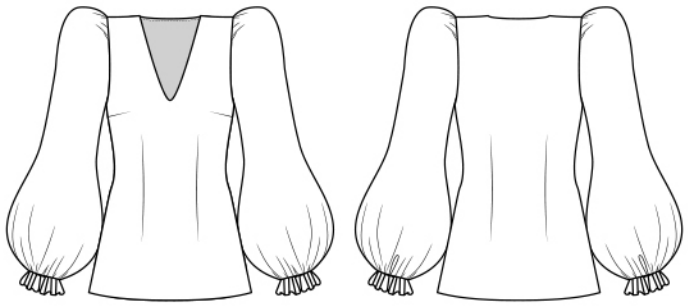


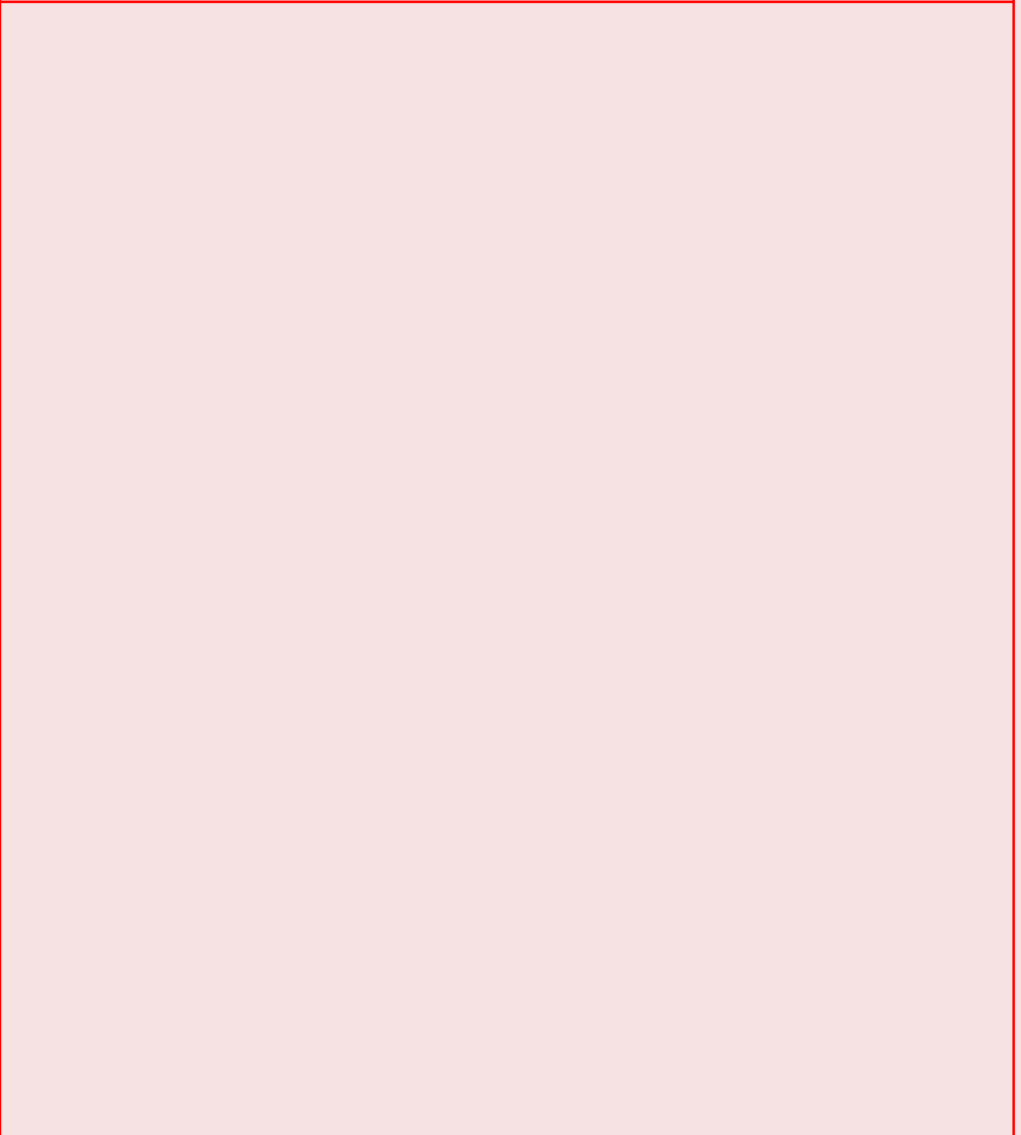
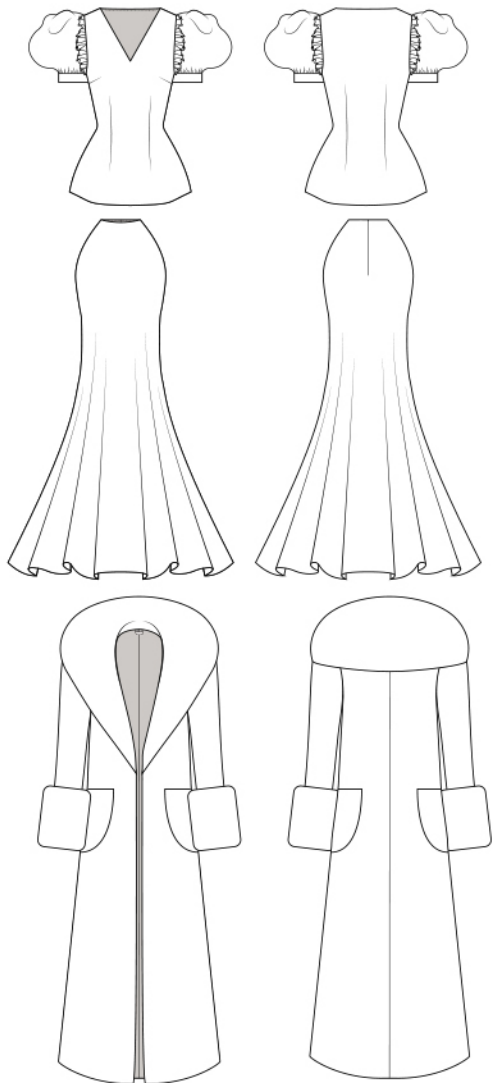
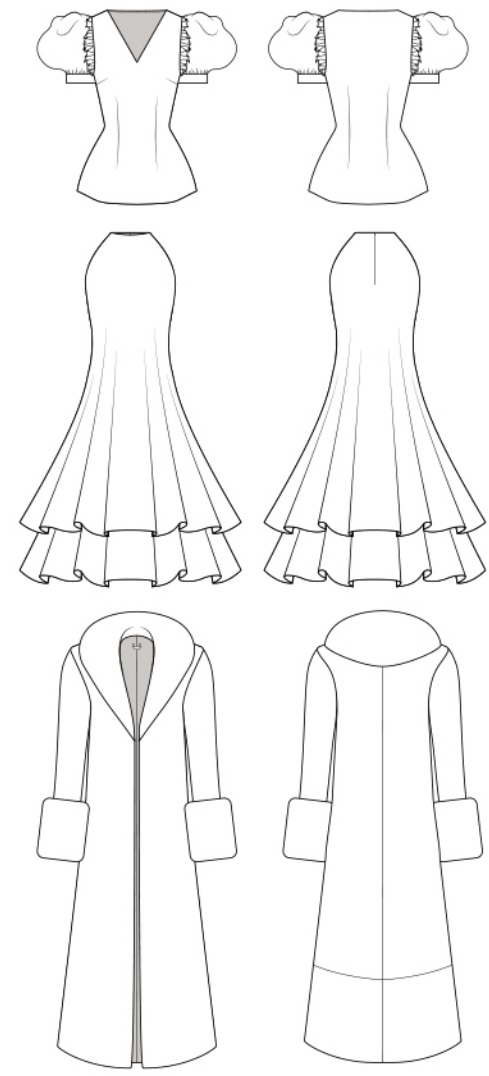
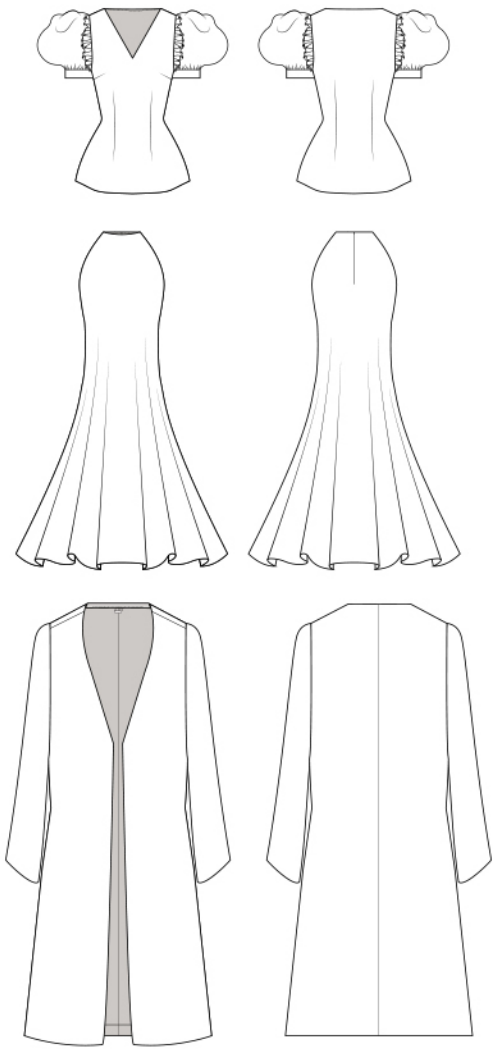
[#graduationproject](#)















R



P













S

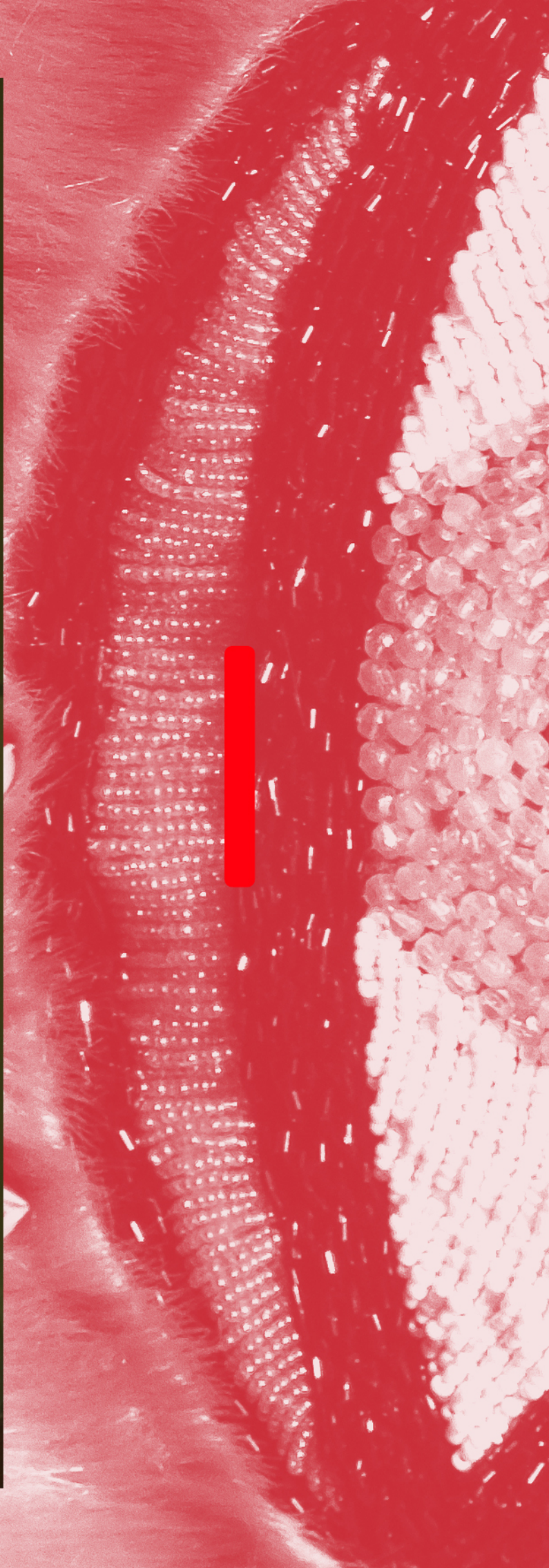
C

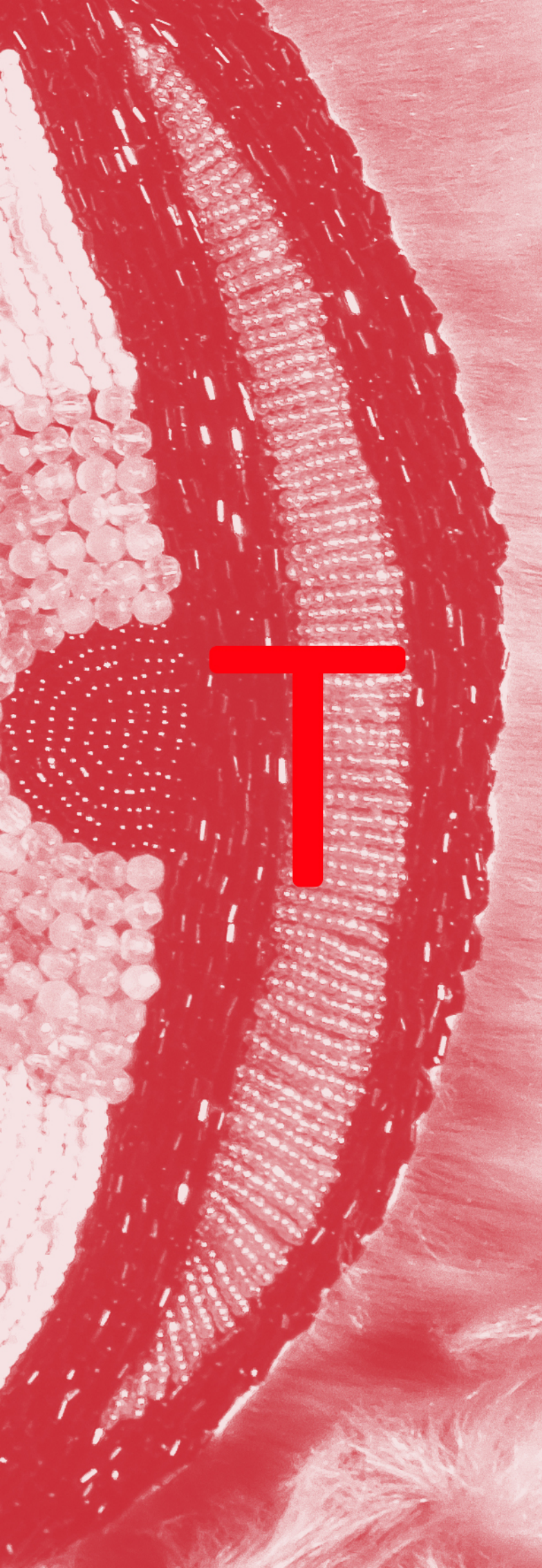
E

D





















ELECTIVE

PORTFOLIO
FASHION DESIGN